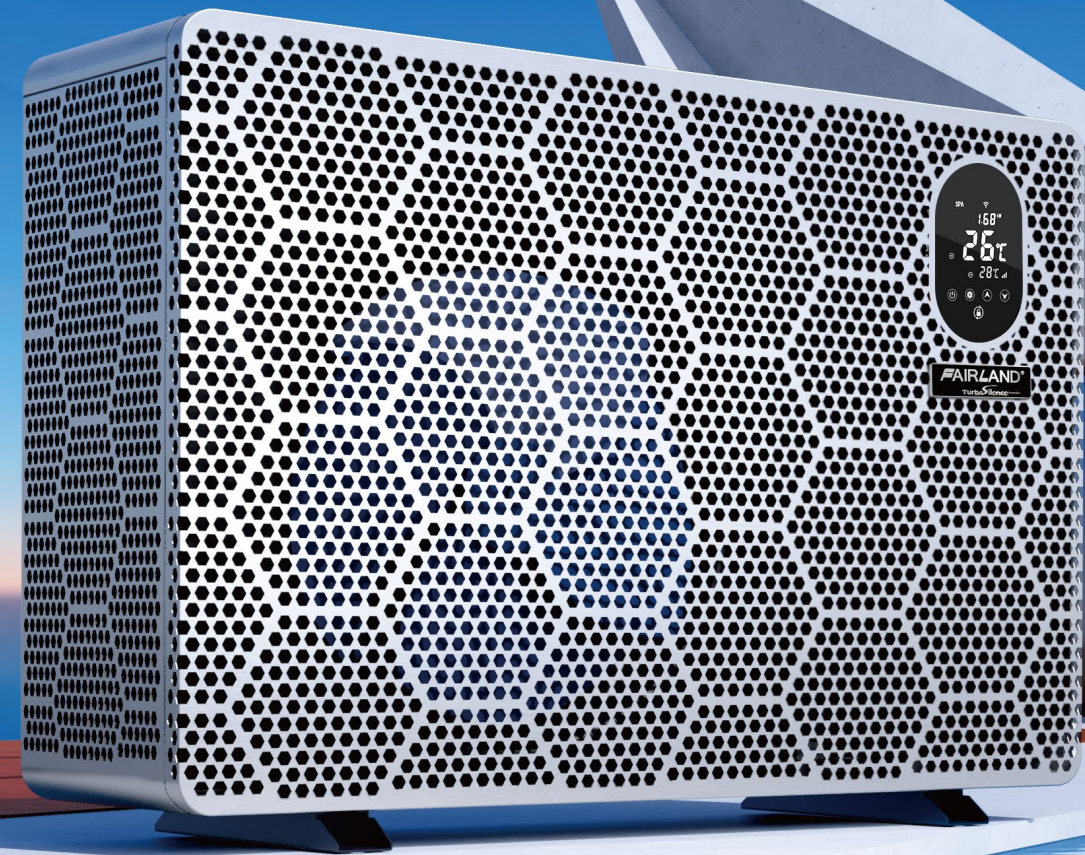


# INVERX<sup>20</sup>

Up to **20**x Energy Saving  
(1kW Input, 20kW Heat in Return)

Up to **20** Times Quieter



**FAIRLAND<sup>®</sup>**  
20x Saving iGarden



**TurboSilence®**

Full-inverter



Up to 20x  
Energy Saving



Up to 20  
Times Quieter



20% Extra Heating  
Capacity



0 Compressor  
Noise

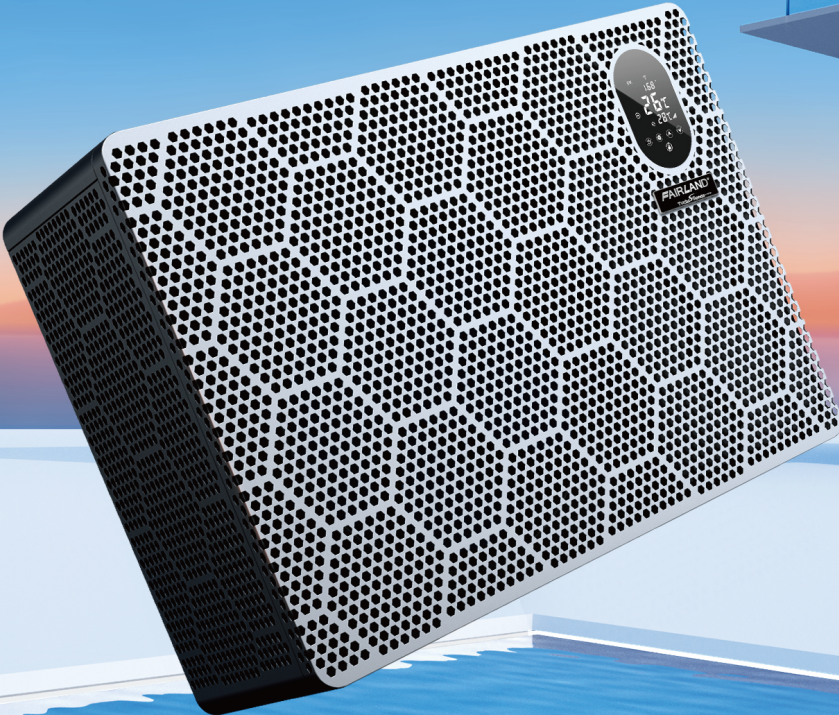
The TurboSilence Full-inverter is optimized based on Fairland's original Full-inverter technology. It perfectly balances inverter-compressor control and heat exchanging technology, bringing Turbo performance and Silence operation.

**Turbo:** 120% Heating Capacity  
Quickly heating to reach the desired pool temperature.

**Silence:** Intelligent adjustment when maintaining temperature  
30% heating capacity on average to maintain the desired temperature with less noise and 20 times energy saving.

**COP20**

New industry standard  
for energy efficiency





# 20x Saving TurboSilence®

Active Energy Saving, Intelligent Algorithms  
Reduces Consumption Precisely

## 20x Energy Saving

COP 20: 1kW Input = 20kW Heat in Return

TurboSilence Full-inverter control system adapts with precise energy consumption solutions, COP up to 20, average COP>15. Even at low temperature, it can automatically and intelligently control the heat pump to produce free heat output according to pool need.

## 20 Times Quieter

Sound Pressure 20 Times Lower than On/Off Heat Pump



## 4 Season Running

Operation Temperature down to -15°C

Extend swimming seasons to all year round.

❄️ -15°C

☀️ 43°C

# INVERX20

## 3 Intelligent Mode for Various Needs

### Turbo Mode

120% heating capacity, heat up the pool to the target temperature in less time

### Smart Mode

20~100% heating capacity intelligent maintenance of pool temperature and implementation of matching optimum heating capacity

### Silent Mode

20~60% heating capacity with low-speed running, noise-free backyard vibe



Real-time Power Consumption Display

Holographic Displays Touch Controller

## INVERX20 SPECS R32

Model	IXP26	IXP36	IXP46	IXP56	IXP66	IXP80	IXP80T	IXP110T
Advised pool volume (m3)	20~40	25~50	30~60	40~75	55~100	65~120	65~120	90~160
Operating air temperature (°C)	-15~43							
Performance Condition: Air 26°C, Water 26°C, Humidity 80%								
COP	18.8~7.6	20.0~7.8	20.0~7.0	20.7~7.4	20.3~7.3	20.0~7.5	20.0~7.5	20.2~7.3
COP at 50% capacity	15	15.2	15.1	15.3	15.2	15.1	15.1	15
COP at 20% capacity	18.8	20	20	20.7	20.3	20	20	20.2
Heating capacity (kW) in Smart mode	8.8	11.3	14	18	22	27.5	27.5	35
Heating capacity (kW) in Turbo mode	11	13.5	17	21	26	32	32	40
Performance Condition: Air 15°C, Water 26°C, Humidity 70%								
COP	8.0~5.0	8.1~5.2	8.0~4.7	8.0~4.9	8.3~5.1	8.3~5.4	8.3~5.4	8.2~5.0
COP at 50% capacity	7.2	7.3	7.4	7.5	7.7	7.6	7.6	7.5
COP at 20% capacity	8	8.1	8	8	8.3	8.3	8.3	8.2
Heating capacity (kW) in Smart mode	6.3	7.5	9.5	12	15	18.5	18.5	24.5
Heating capacity (kW) in Turbo mode	7.5	9.2	11.5	14.8	18.2	22.3	22.3	28.5
Sound pressure at 1m dB(A)	38.5~45.5	38.6~46.9	42.0~47.7	42.9~50.8	40.8~51.2	43.3~51.9	43.3~51.9	42.5~51.7
Sound pressure of 50% capacity at 1m dB(A)	39.5	41.3	43.7	44.5	44.4	46.4	46.4	43.8
Sound pressure at 10m dB(A)	18.5~25.5	18.6~26.9	22.0~27.7	22.9~30.8	20.8~31.2	23.3~31.9	23.3~31.9	22.5~31.7
Heat exchanger	"3D Spiral" titanium heat exchanger							
Casing	Aluminum-alloy Casing							
Power supply	230V/1 Ph/50Hz						400V/3 Ph/50Hz	
Rated input power at air 15°C (kW)	0.19~1.53	0.23~1.8	0.29~2.45	0.31~3.02	0.38~3.57	0.46~4.1	0.46~4.1	0.60~5.7
Rated input current at air 15°C (A)	0.83~6.65	0.91~7.82	1.26~10.6	1.35~13.1	1.65~15.5	2.01~17.8	0.66~5.91	0.87~8.22
Advised water flux (m³/h)	2~4	3~4	4~6	6.5~8.5	8~10	10~12	10~12	12~18
Water pipe in-out size (mm)	50							
Net Dimension LxWxH (mm)	799×432×650	893×432×650	939×432×650	995×432×750	1125×429×952	1074×539×947	1074×539×947	1260×539×947
Net weight (kg)	/	/	/	/	/	/	/	/
Qty per 20'FT / 40'HQ (sets)	/	/	/	/	/	/	/	/

\* The advised pool volume indicated applies under following conditions: Swimming pool is well covered; system runs at least 15 hours per day;  
\* The final specs will be in accordance with the specs on the product .



**Fairland Group Limited**  
Room 2315-2317, No.69, Xianlie Road Central Guangzhou,  
P.R.China 510095

**Tel: 0086-20-87322418**  
**Fax: 0086-20-87327767**  
**E-mail: sales@fairland.com.cn**  
**Web: www.fairland.com.cn**